

# Importance of Soil Moisture in Potato Farming

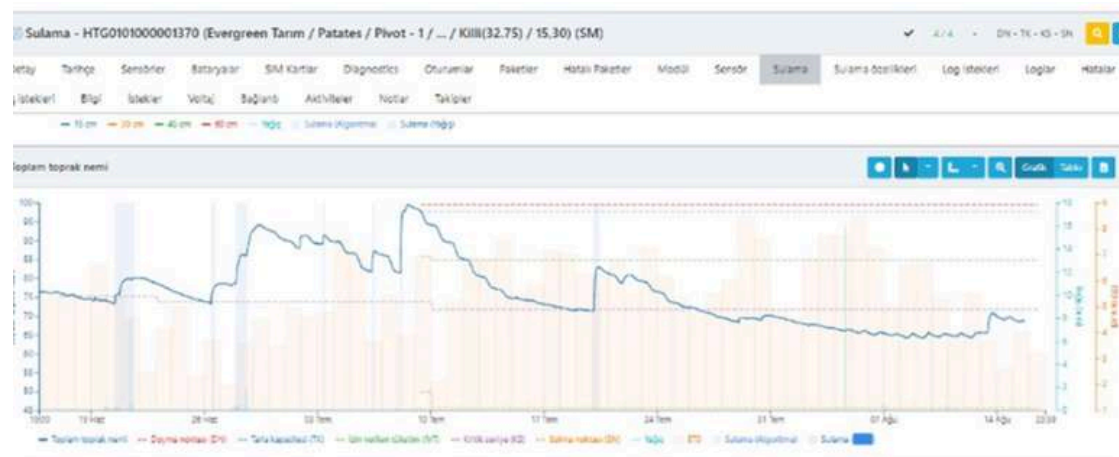
The farmer employs both sprinkler and pivot irrigation systems throughout his field. Using the sensor data, he observed the following distinctions:

- In the section where **sprinkler** irrigation is used, the **moisture level stands at 35%**,
- Conversely, in the section with **pivot** irrigation, the **moisture level is at 20%**.



Given that a 20% moisture level is suboptimal for potatoes, it's been decided to adjust the pivot's speed. Previously, irrigations proceeded at **30m/h** with set intervals. The pivot speed has now been ramped up to **50m/h** for **two cycles**, leading to a marked **enhancement in the root moisture level**.

## Pivot Irrigation: Moisture Level %20



## Sprinkler Irrigation: Moisture Level %35

